

## Technical Specification D.C. Analyzer (Special)

### Measuring Principle

- ❖ Photometric, 2-channel LED photometer (405/570/740nm) with 2 reference channels

### Measuring Unit

- ❖ Controlled at 37°C +/- 0.4°C
- ❖ 2x measuring channels and reference channels

### Test Volume

- ❖ 32 cuvette ring rotor for single use
- ❖ Total min. required 150µl max. 300µl

### Sample/Reagent Platform

- ❖ 2x11 sample positions
- ❖ 15 reagent positions (3x15ml, 12x5ml), 2 stirred
- ❖ 3 STAT positions
- ❖ 1 wash station

### Sampling

- ❖ Capacitive pipetting device, moves in 3 directions
- ❖ Pipettor heated at 37°C
- ❖ Dilutor, 2-250µl (precise in 1µl steps)

### Display

- ❖ Touch sensitive color display
- ❖ On-board graphic user software

### Interfaces

- ❖ 2x RS232C, 2x USB, LAN & ChipCARD™ reader

### External Connections

- ❖ External printer via USB interface (option)
- ❖ External Barcode Scanner via RS232C (option)

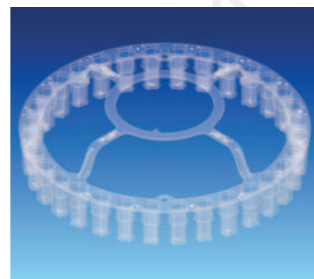


### Dimensions/Weight

- ❖ 78.0 x 58.2 x 49.8cm, ca. 25kg
- ❖ 30.7 x 22.9 x 19.6in., ca. 55.1lb

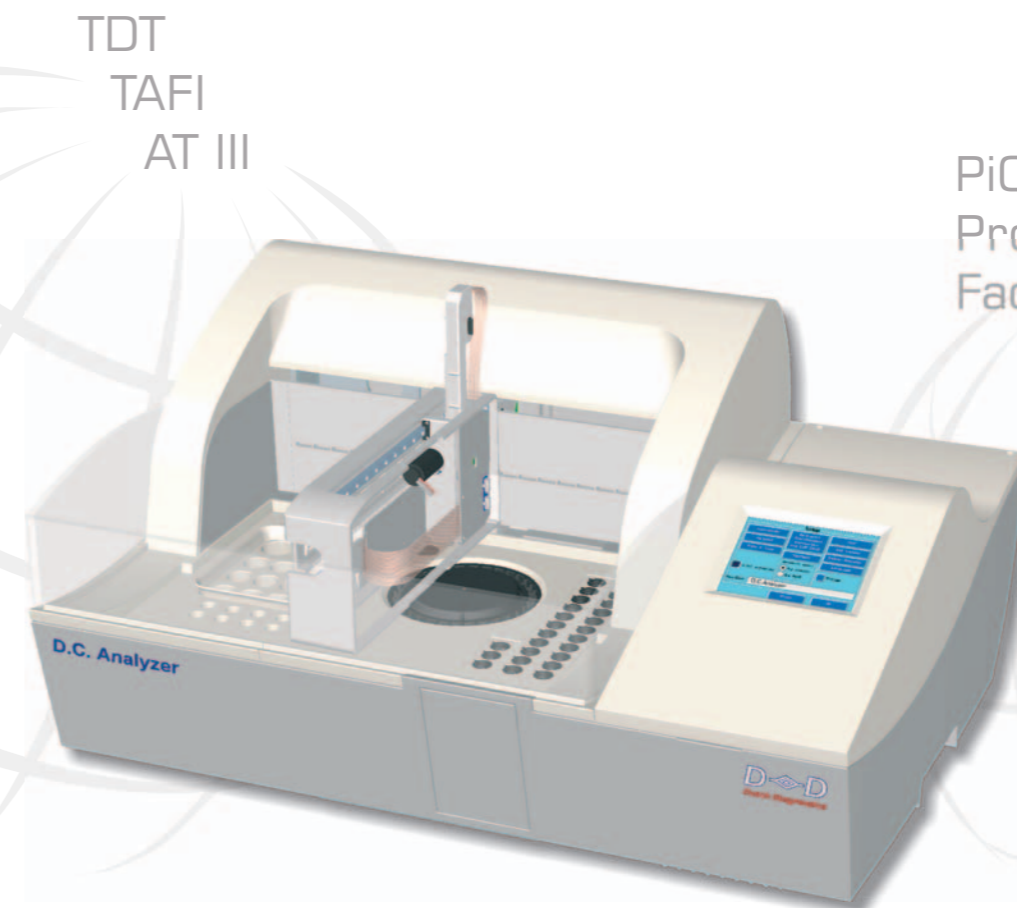
### Assays

- ❖ Coagulation
  - PT, APTT, Fibrinogen, PT/FIB, Thrombin Time, Batroxobin Time, Protein C&S, Ecarin Test
  - Single Factors (II-XII), APC-R Factor V Leiden
  - PiCT (Prothrombinase induced Clotting Test)
- ❖ Latex Assays
  - D-Dimer, CRP (C-Reactive Protein)
- ❖ Chromogenic Assays
  - AT III,
  - TDT (Thrombin Dynamics Test),
  - TAFI (Thrombin Activatable Fibrinolysis Inhibitor)



# D.C. Analyzer

... a concept that satisfies  
your future requirements ...



TDT  
TAFI  
AT III

PiCT  
Protein C&S  
Factor V Leiden

PT  
APTT  
deriv. FIB  
TT

D-Dimer  
CRP



### Dutch Diagnostics

Hekkehorst 3  
7207 BS Zutphen  
The Netherlands

tel +031 (0)575-512300  
fax +031 (0)575-510164  
email info@dutch-diagnostics.com



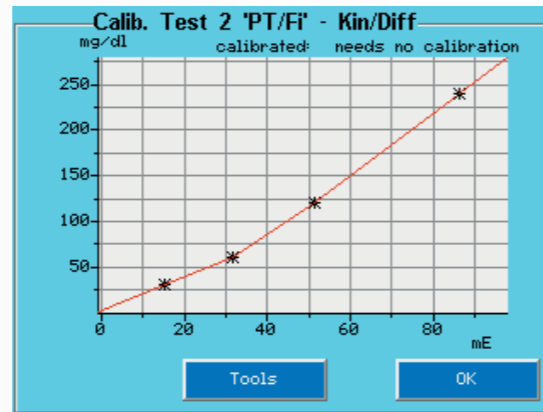
Human and animal care  
www.dutch-diagnostics.com

# The D.C. Analyzer system concepts

The D.C. Analyzer represents a new era of fully automated benchtop analysers for all sized laboratories. The stand-alone modular concept guarantees continuous compliance to a changing laboratory environment at any time.

## Basic System-Highlights

- ❖ Graphic color display of reaction curves, real-time recording
- ❖ 50 reagents and test locations individually editable
- ❖ Up to 100 results and curve data can be stored in a ring memory or alternatively on an USB-Stick
- ❖ 4 different intensive wash cycles (2 washer usable)
- ❖ Calibration/reference curves editable up to 7 meas. points
- ❖ 2 calibration curves can be assigned to each test
- ❖ Automated result calculation
- ❖ Software/parameter updates via USB-Stick
- ❖ Multilanguage user software



## User friendly

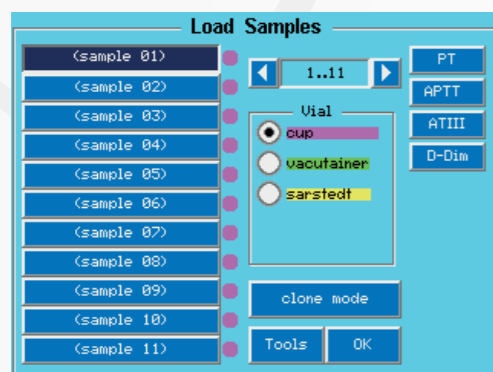
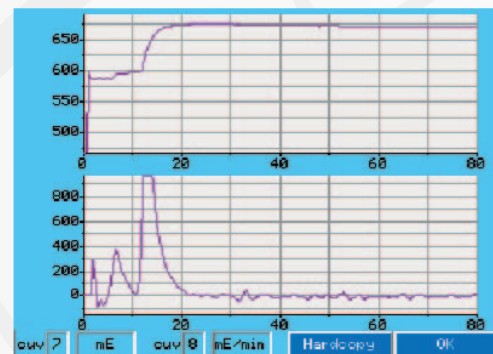
- ❖ Small foot-print w/o peripheral equipment
- ❖ New designed intuitive graphic user interface
- ❖ Touchscreen navigation (multi-color display)

## Reliable

- ❖ High sensitive LED photometer (2 or 3 wavelength selectable)
- ❖ Linearity up to 30D
- ❖ Free selectable evaluation methods (fixed absorbance, kinetic, difference, mE/s, max. OD)
- ❖ STAT -program

## Economical

- ❖ Open system (Throughput: 150 PT/h - 100 APTT/h - 120 Fibrinogen/h)
- ❖ Single-use cuvette ring (32 cuvettes each)
- ❖ Micro volume (150µl - 300µl)
- ❖ Removable reagent tray suitable for various reagent vial sizes (for storage in cooler)
- ❖ Different primary and secondary sample vials placeable



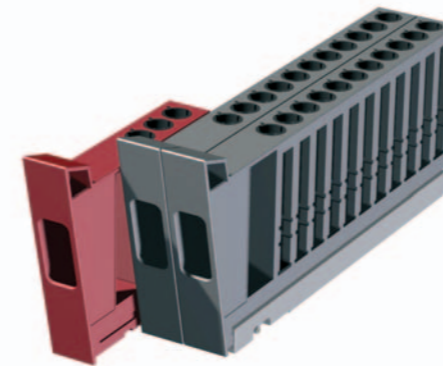
# Enlarge your D.C. Analyzer



Select out of a variation of beneficial soft- and hardware options and features. Upgrade your analyser at the time of your convenience or select the favorite model at once.

## Software add-on's

- ❖ Auto repeat function
- ❖ Automated calibration
- ❖ Bi-Directional HOST communication
- ❖ QC program
- ❖ External database & viewer PC-Software



## Hardware add-on's

- ❖ Reagent cooling on-board
- ❖ Removable sample racks (2x11 sample positions + 3x STAT)
- ❖ Higher throughput by adding 2 measuring channels
- ❖ Positive barcode identification incl. LIS connection
- ❖ Halogen lamp photometer with up to 12 wavelength

## Options & Systems:

	D.C. Analyzer Basic	D.C. Analyzer Special	D.C. Analyzer Clinical Chemistry
Photometer type	LED	LED	Halogen lamp
Wavelength (nanometer)	570	405   570   740	12 wavelength
Measuring channels	2 +2	2 +2	1 +1
Coagulation:	PT, APTT, Fibrinogen, PT/FIB, TT, BT, Protein C&S, Ecarin Test, Factors (II-XII), Factor V Leiden, PiCT	✓	✓
Latex Assays:	D-Dimer, C-Reactive Protein	✓	✓
Chromogenic:	AT III, TDT, TAFI	✗	✓
Clinical Chemistry:	Depending on wavelength	✗	✓
Aggregation:	ADP, v. Willebrand RiCo Factor, etc.	✗	Update option
Positive Barcode Identification (Samples), incl. Removable sample racks Removable STAT rack Internal Barcode Reader	Update option 2x11 1x3 1	Update option 2x11 1x3 1	✓
Reagent Cooling Block (< 15°C)	Update option	Update option	✓
Bi-Directional HOST communication	Update option	Update option	Update option
Software Upgrades: Auto repeat function Automated calibration QC Program	Update option	Update option	✓